



Frost Top application

September 2021

Spring USA Custom Solutions

Built to accommodate any space or foodservice need, Spring USA custom solutions combine beauty and function from the ground up.

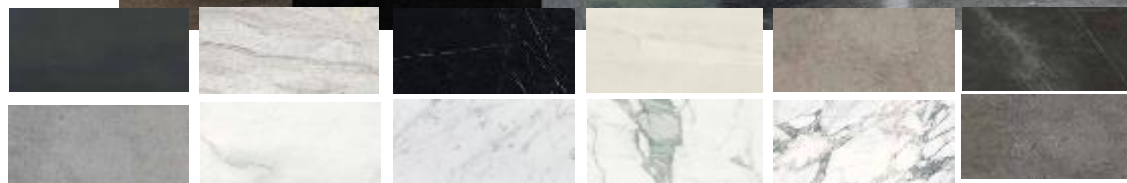
- **Mobile Stations** - provides high-speed heating, refrigerated drawers for easy replenishment of food items and quiet, efficient air filtering that removes grease laden vapor and odors all within a beautiful, stainless steel cabinet
- **Frost Top Tables** – an elegant, clean and reliable source for keeping cold food or drink while maintaining functionality
- **Custom tables** – your design brought to life by Spring USA custom tables, from hidden induction, ice wells, or frost tops, you can design the functional furniture that works for your space
- **SmartStone system** - exclusively designed to work with Spring USA hidden induction ranges, frost tops, & exposed ranges



Spring USA SmartStone[®] System

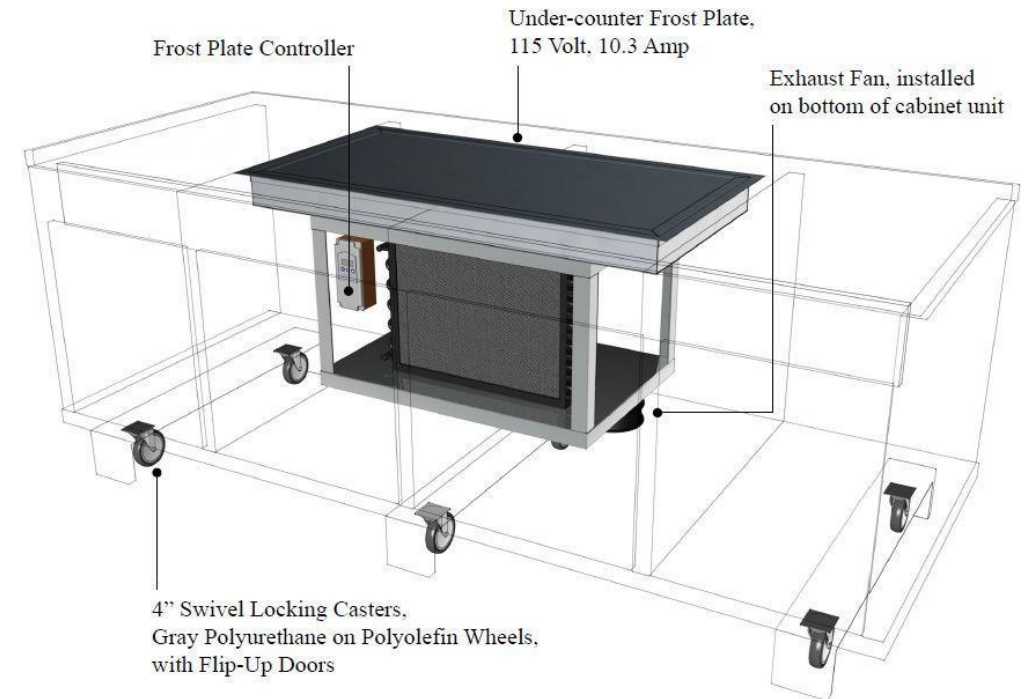
- Exclusively designed to work with Spring USA
 - Hidden induction ranges
 - Frost Tops
 - Exposed Ranges
- Trivetless System - no extra pieces to stock or lose
- Durable – stands up to the rigors of a commercial setting
- Non-porous & NSF Approved – easy to clean and maintain
- Scratch Resistant – one of the hardest materials available in the market

STYLISH SURFACES. CUSTOM WORKTOPS.



Hidden Frost Tops

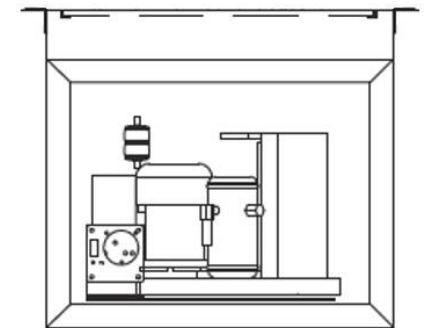
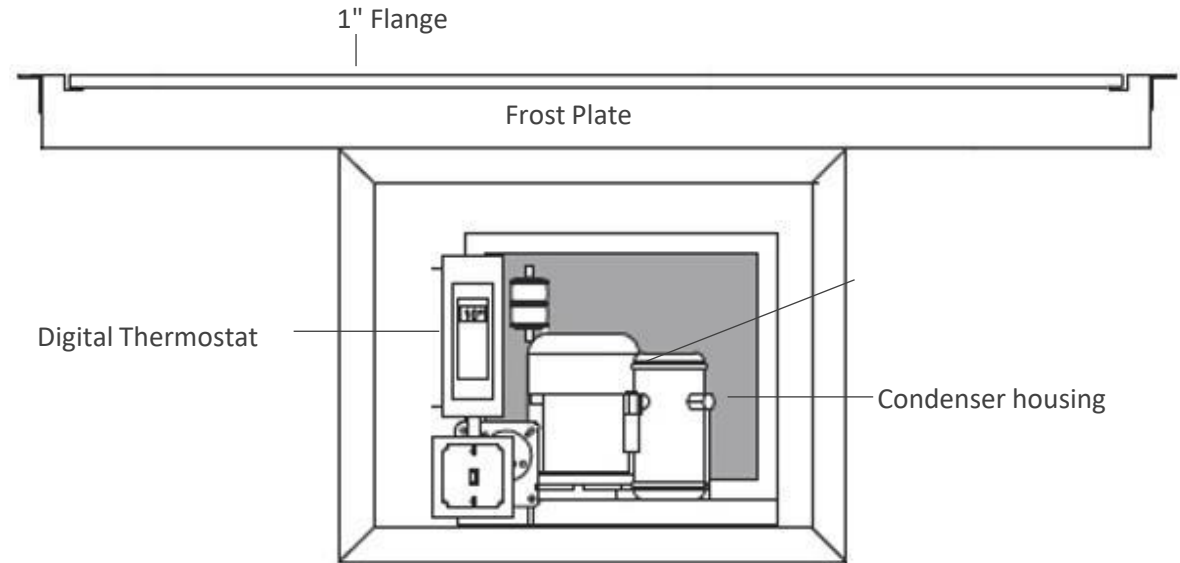
- Custom or standard sizes available
- Customize airflow
- Stainless steel housing
- **Warranty** – 2 months parts and labor, 1-year parts
- Surface temperature ranges from 0° to 30°F
- Works on all non-porous stone or porcelain
- Request remote compressor to minimize noise
- NSF and UL Certified
- Made to order – **4-5 week lead time**
- **No drain necessary (hidden only)**



Unmatched Quality and Construction



- 18-gauge, 304 stainless steel housing
- Fully insulated housing with 2" polystyrene for efficiency and energy savings
- Made in the USA
- One-piece construction
- 1" flanged perimeter for easy mounting
- Digital thermostat
- Stainless steel condenser base
- 1-1/4" angle iron frame condenser housing
- Hermetically sealed compressor with 404-a refrigerant
- Thermostatic expansion valve with drier and sight glass for easy service



Standard Sizes – Available in AQ, Revit and AutoCad

Item #	Frost Zone Dimensions	Voltage
SS-FT-2422	21.6" x 19.6"	110-120
SS-FT-3622	33.6" x 19.6"	110-120
SS-FT-4822	45.6" x 19.6"	110-120
SS-FT-6022	57.6" x 19.6"	110-120
SS-FT-7222	69.6" x 19.6"	208-240

Advantages of a Hidden System



- Flexible, future proof space
- Placed in **mobile** or fixed applications



- Seamless aesthetic
- Easy to clean and maintain

A kitchen counter with a stainless steel tray holding several bowls of fresh fruit. The bowls contain blueberries, sliced strawberries, raspberries, and blackberries. There are also bowls of granola and shredded coconut. In the background, there are jars of nuts, a bottle of blue agave, and a bottle of vanilla extract.

Applications and Vessels

Applications & Opportunities

Menu option

- Omelet bar
- Fruit and yogurt
- Cold cuts
- Sushi
- Cold salmon
- Ice cream – rolled or “Cold Stone Creamery”
- Almost anything refrigerated or frozen

Venues

- Event venues
- Breakfast buffet
- Banquets
- Country clubs
- Executive lounges



Vessels

Most single-walled vessels

- **Aluminum – best option**
- Ceramic
- Glass
- Stainless steel
- Melamine* – poor conductivity
- Disposables/individually packaged items

Avoid...

- **Anything insulated** – insulation works both ways
- **Anything with a foot** – creates air gap/insulation
- **Deep melamine vessels** – poor conductors of temperature



IronLite



Motif



SKYRA Pail



SKYRA Tub

Hidden Frost Top **Points of Difference**

- **Customization**

- Size – fully customizable
- Airflow - direction
- Remote compressor option
- Water cooled compressor option
- Power – higher horsepower compressors



Hidden Frost Top **Points of Difference**

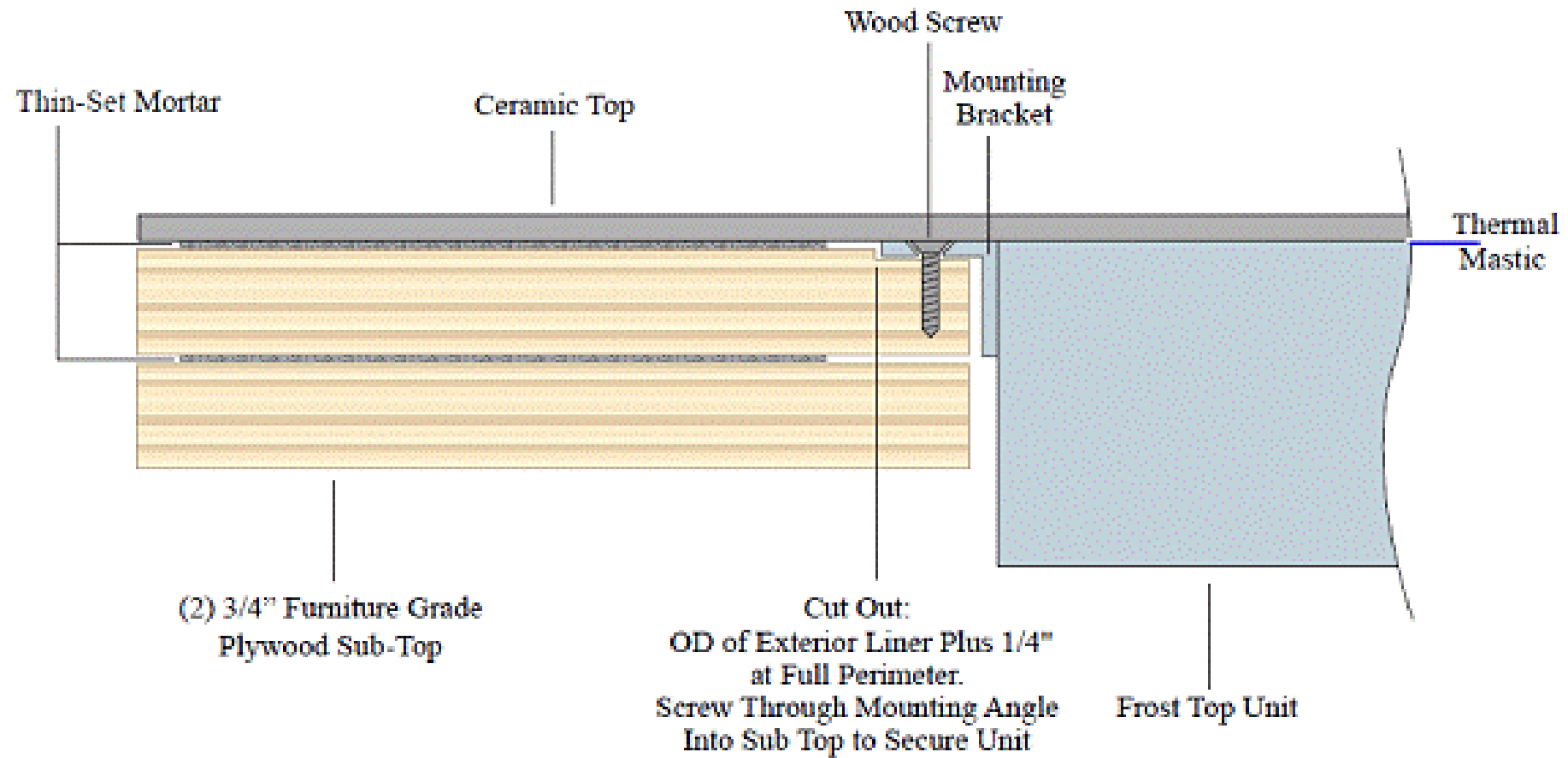
- **Unmatched Reliability, Quality and Construction**
 - 18-gauge, 304 stainless steel housing
 - Fully insulated housing with 2" polystyrene for efficiency and energy savings
 - One-piece construction
 - Fully welded and sealed with high strength silicone sealant
- **Post Sale Customer Support**





Installation Review

Basic Mounting



Preparing the Cabinet

Before the stone goes in...

- Installed in the substrate, prior to stone being applied
- Cut will need a strip around the whole router-add out to 1/16" so the flange will set flush with the top
- Remember to account for....
 - Airflow
 - Power
 - Compressor placement
 - *no drain needed on hidden system



Installing the Frost Top

Before the stone goes in...

- Set the frost top
- Level the plate with surrounding substrate
- **Liberal**ly and evenly apply the thermal mastic



Installing the Frost Top

Support the compressor – prevents counter damage



Installing the **Frost Top**

Finished Product



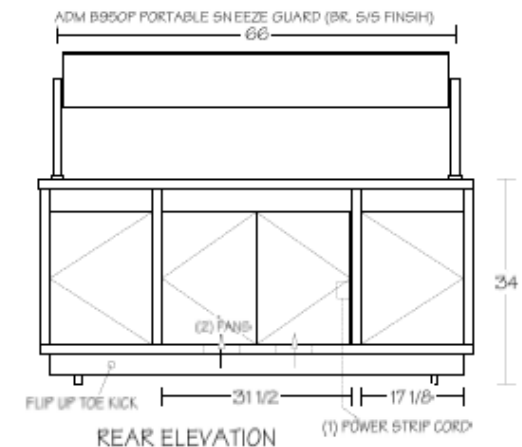
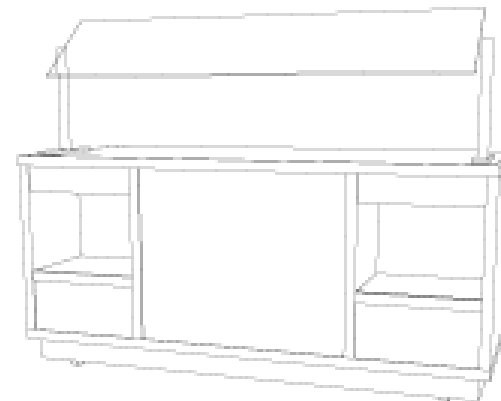
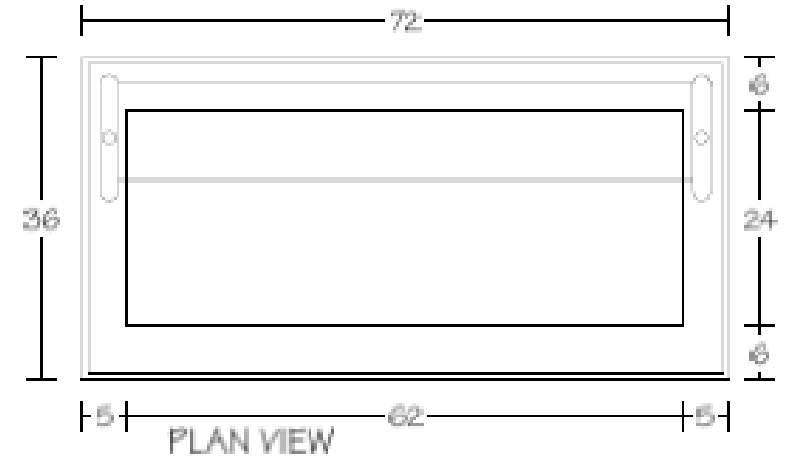


Examples from
the field

Hilton Miami Airport



- Hidden induction in matching credenzas
- Hidden frost top in Credenzas



Hilton Rosemont

Frost top on



Frost top off



Hilton Knoxville



- Hidden induction in table
- Hidden frost top in counter

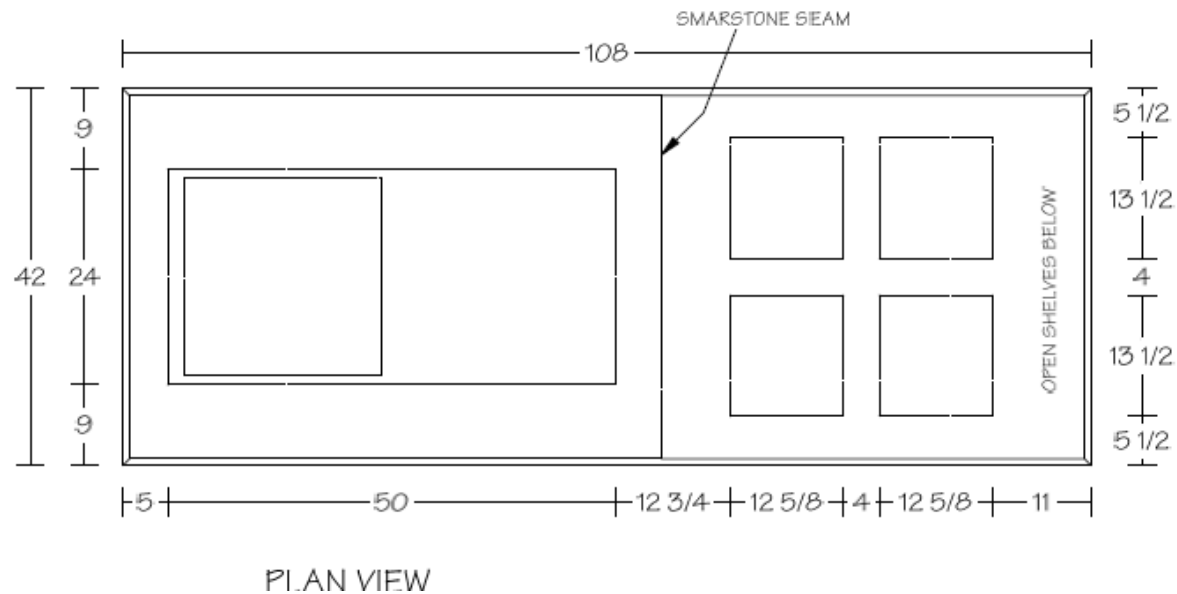
Canopy Bethesda



- Hidden induction in table
- Hidden frost top in counter/bar
- Hidden frost top in Sealed Marble – needs regular sealing



Canopy West Palm Beach



- Hidden frost top and induction in same counter



THANK YOU.

Jackson Biller

National Accounts Manager,

Spring USA & Astra Manufacturing

jbiller@springusa.com

