

Functional Furniture: The Communal Table

Strategic Hotels and Resorts



Functional Furniture Overview



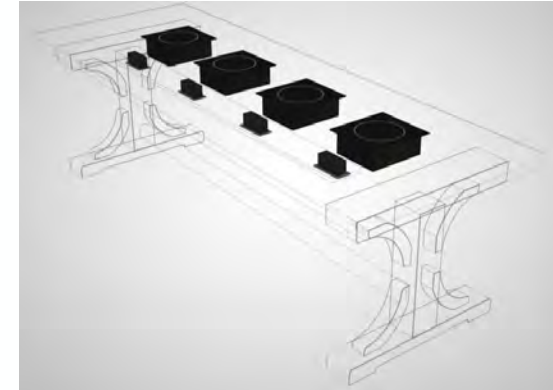
Bringing Our Customers Vision to Life **Since 1992**

The leader in functional furniture, we brought hidden induction to the United States and have been innovating the space ever since.

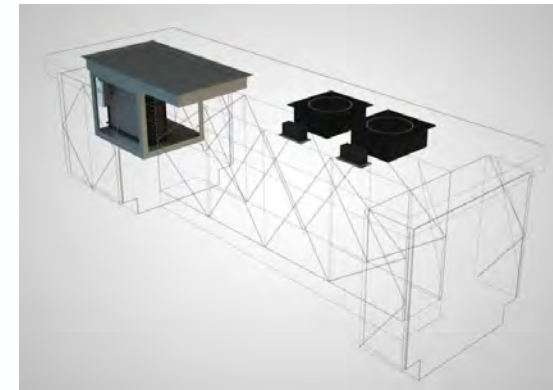
- Functional, multi-purpose pieces
- Created to fit any style
- Selection of table type
- Custom finishes
- Specified dimensions

Functional Furniture includes Hidden Elements

Hidden induction ranges



Hidden frost top and
hidden induction
ranges



Flexibility and **Future Proofing**

1. Induction/ frost top hides
in plain sight



3. Repurpose the space when not
in use for foodservice



2. Easily adapts to occupancy
and needs



SmartStone[®] System



TRIVETLESS INDUCTION

Specifically designed to work with Spring USA hidden Induction Ranges and Frost Tops



SUPERIOR DURABILITY

Resistant to scratches, stains, chemicals, UV, and corrosion



NSF-CERTIFIED

Compact, non-porous material does not harbor bacteria, easy maintenance



PREMIUM FINISHES

A vast color palette of natural, polished or pre-polished finishes





The Communal Table

Custom Tables: **The Communal Table**

Communal table: A table that when not in use for foodservice, can be used for people to gather around.

- Includes hidden induction/ frost top
- Is one of the top 3 most requested type of table
- Allows for repurposing of space



Communal Table **Types**

Comes in many different designs!



Useful in an Array of **Environments**

Restaurant



Bar



Lounge/Lobby Space



Designing a Communal Table

1. Determine Functionality

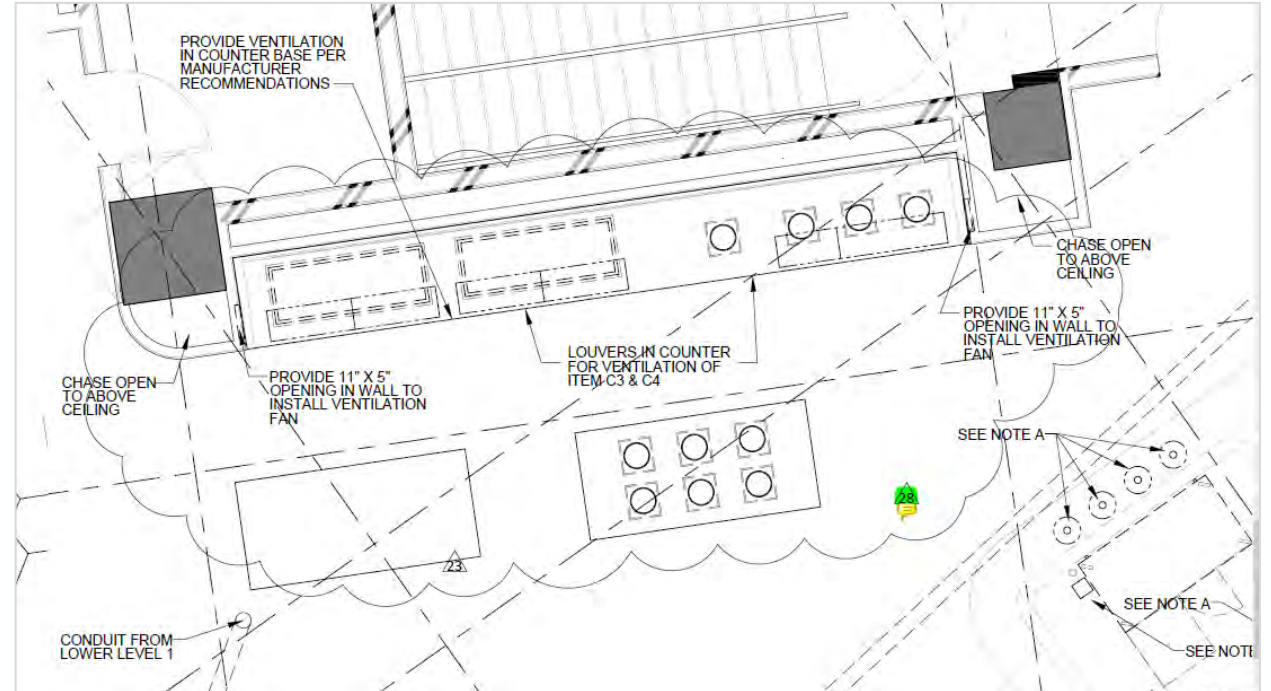
- Induction / frost top
- Storage
- Single or double sided
- Mobile or fixed
- What's it being used for when not a buffet



Designing a Communal Table

2. Identify Space

- Supporting counters/tables for buffet
- Space/layout in the room
- Available power
- Height of chairs - deceptively important



Designing a Communal Table

3. Define Style

- Legs and top
- Finishes
- Suggested styles
- Make your own – you dream it, we can build it

DESIGN INSPIRATION



FINAL DESIGN



Designing a Communal Table

4. Outline Options

- Matching ambient table
- Modesty screen
- Control box placement
- Castors – requires additional support
- Sneeze guards and safety shields
- LED lighting
- Plate shelves - often in legs
- Convenience outlets
- Grommet holes



Convenience **Outlets**

Placement	<ul style="list-style-type: none">▪ Apron▪ Popup on table▪ Leg – inside or outside
Style	<ul style="list-style-type: none">▪ Basic duplex▪ USB/USBC▪ Color
Electrical code	<ul style="list-style-type: none">▪ Must be dedicated connections▪ Cannot daisy chain with other equipment/outlets





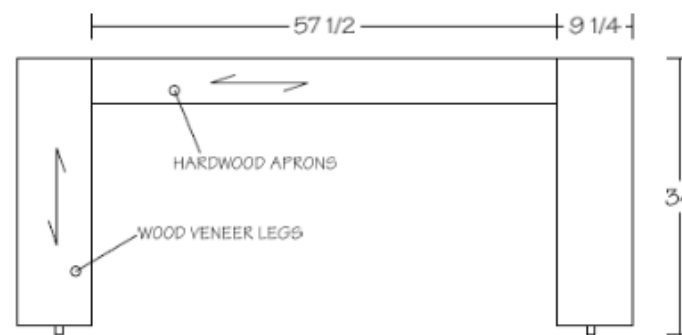
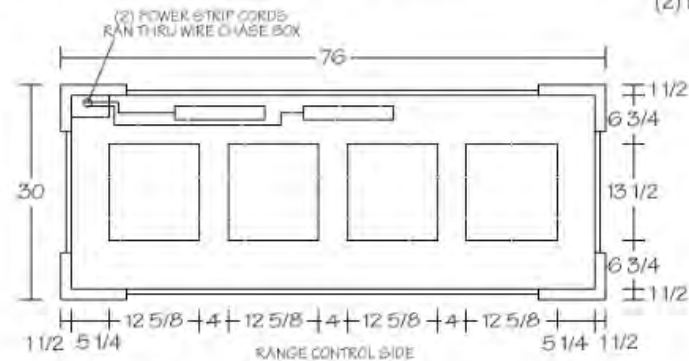
**Design
Examples**

Mobile Farmhouse

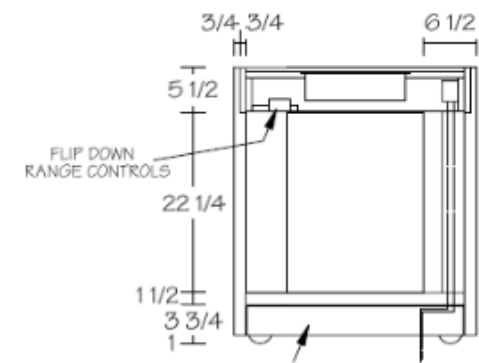
- Casters supported by thicker legs
- (4) SM-651SS requires 2 circuits
- Hollow leg for cord management

30" X 76" X 34" MOBILE FARMHOUSE TABLE (4 HIDDEN 651SS RANGES)
5.4 AMPS EACH

(2) DEDICATED 20 AMP CIRCUITS REQUIRED



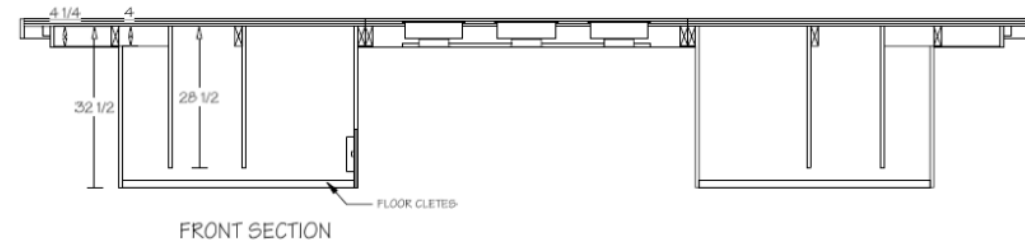
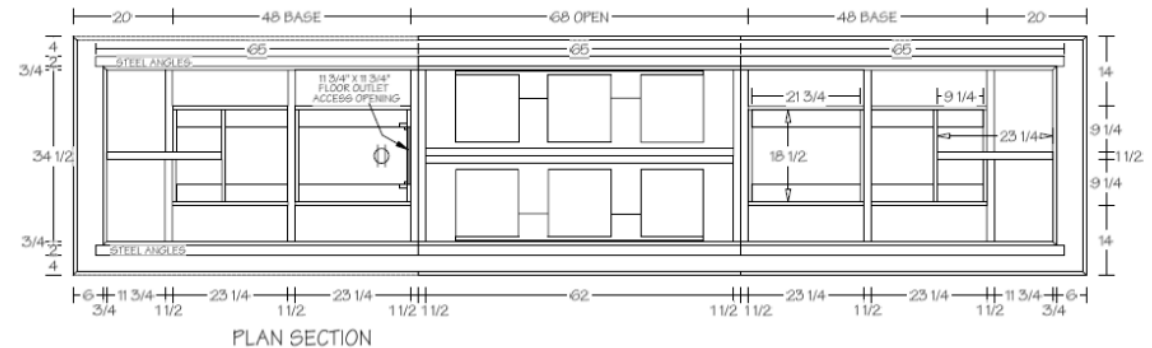
ELEVATION



SECTION

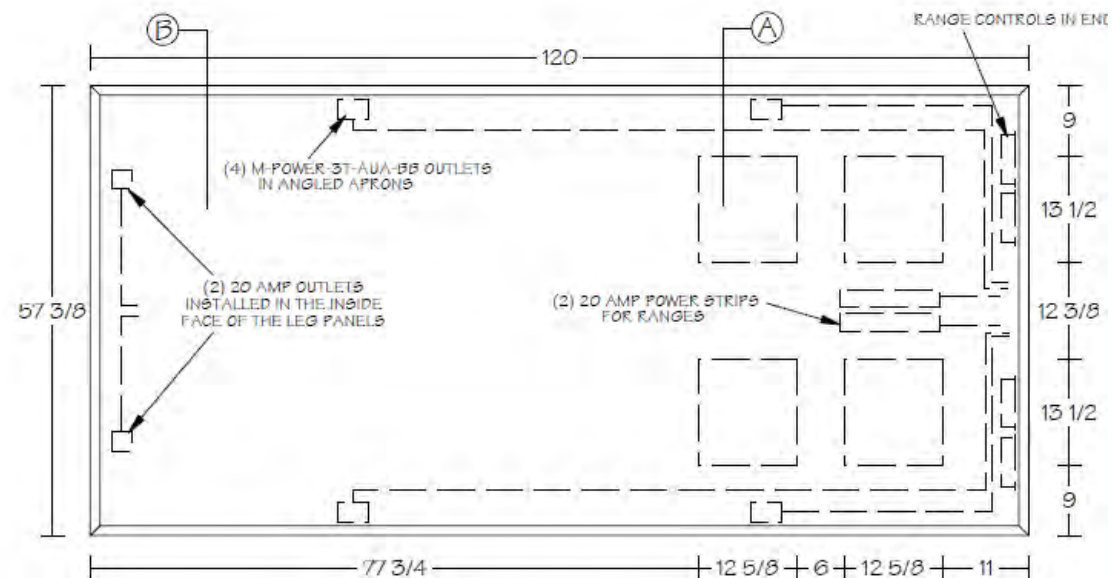
Custom Communal Table

- Multi piece construction
- Pedestal design – requires floor anchors
- Double sided surface – requires +40" wide
- On-site installation team required



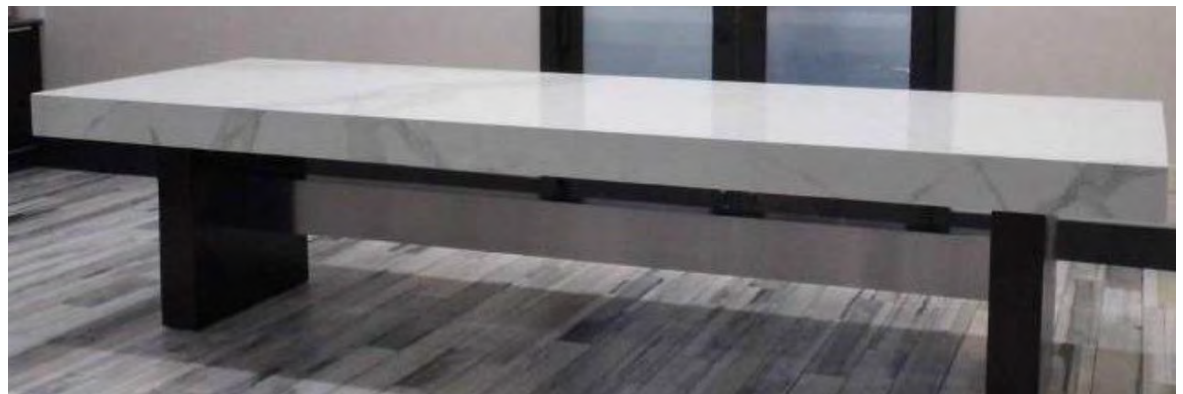
Homewood Suites Table

- Wood Trim with 45-degree knife edge
- Convenience outlets in apron –
 - Duplex with USB and USBC
 - (6) Power receptacles are needed – (4) circuits on right leg, (2) circuits on the left leg
- Hidden control panel in leg



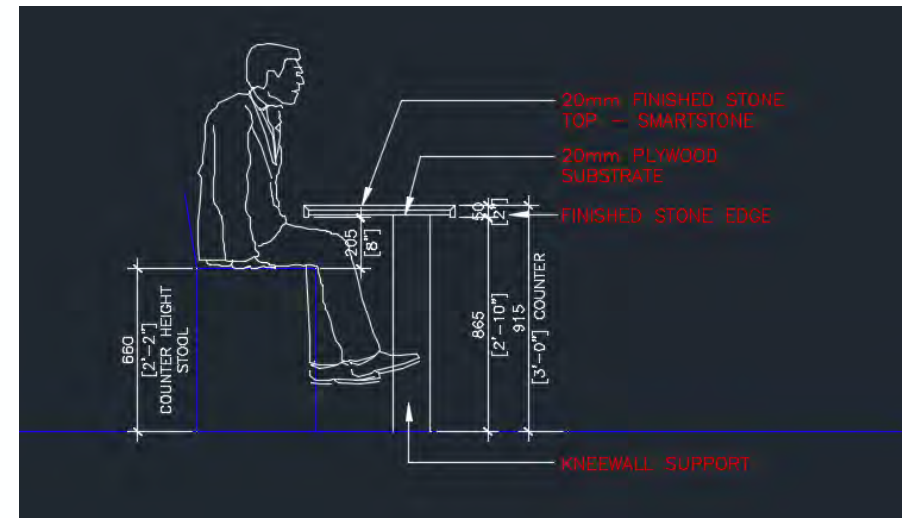
Homewood Suites **Table 2**

- Stone edge
- Repurposed as dinning room, executive board room, or chef's table
- Frost top in counter (top of photo)
- Modesty screen doubles as support



Canopy Bar Table

- Repurposed as bar space when not serving food
- Front and center, focal piece of furniture
- Convenience outlets as popups in counter
- Center support leg
- Cantilevered edge to accommodate bar stools
- Frost top in bar (top right corner of photo)
- Removable sneeze guards



THANK YOU.

Nick Lekos

Global Director of Sales

Spring USA & Astra

Manufacturing

nlekos@springusa.com

