

## Portable Adjustable Self-Service Protector

### FINISH:

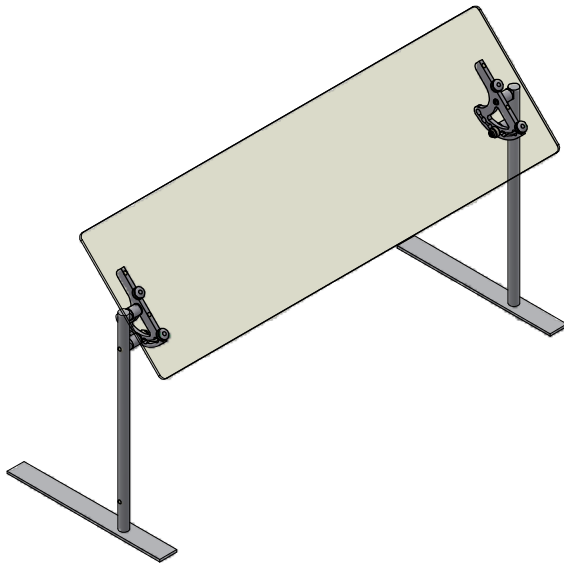
- ☐ Clear Anodized Aluminum  
☐ Brushed Stainless Steel  
☐ Powder Coat:  
☐ Black    ☐ Silver  
 RAL # \_\_\_\_\_

### GLASS (Clear Tempered):

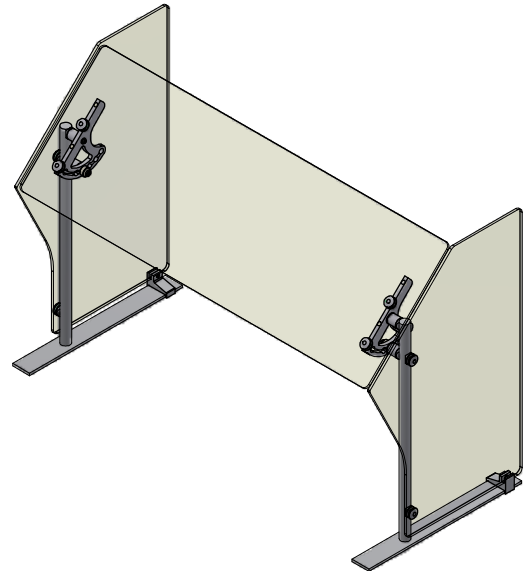
- ☐ 1/4" Front - Std  
☐ 3/8" Front  
 Clear Tempered Glass with Ground  
 & Polished Edges and Rounded  
 Corners

### OPTIONS:

- ☐ 1 End Panel  
☐ 2 End Panels



Basic Models Ship Without End Panels.  
If End Panels are Required, Order the  
Number of End Panel Kits Desired



End Panels are 1/4"  
Clear Tempered Glass  
Unless Otherwise Specified.

PART #	DESCRIPTION:
VG3-P-SP-24	24" OA = 20" Clear = 23" Glass - 1/4" Thick
VG3-P-SP-30	30" OA = 26" Clear = 29" Glass - 1/4" Thick
VG3-P-SP-36	36" OA = 32" Clear = 35" Glass - 1/4" Thick
VG3-P-SP-42	42" OA = 38" Clear = 41" Glass - 1/4" Thick
VG3-P-SP-48	48" OA = 44" Clear = 47" Glass - 1/4" Thick
VG3-P-SP-54	54" OA = 50" Clear = 53" Glass - 3/8" Thick
VG3-P-SP-60	60" OA = 54" Clear = 59" Glass - 3/8" Thick

\*\*Max Recommended Length for any Glass Panel is 60"  
(3/8" Glass)

- End Panels are 1/4" Glass - Can be Added On-site
- Vertical Clearance Range is 15-5/8" to 22-5/8"
- Mounting Base is 2" Wide x 18" Deep
- 1"Ø CNC-Machined Solid Support Posts
- CNC-Machined Component Hardware

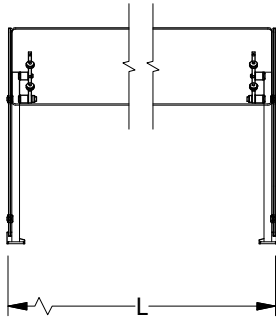


VERSA-GARD®

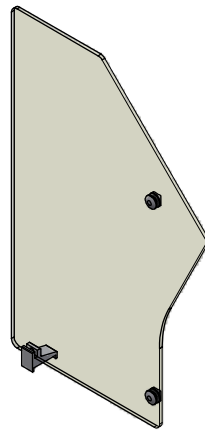
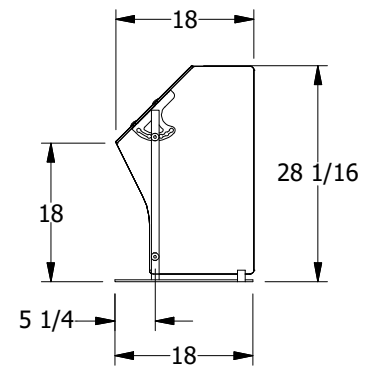
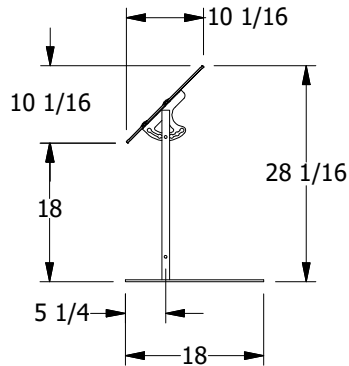
# VG3-P-SP

Protected by US Patent 7,040,723 Other Patents  
Pending

Portable Adjustable Self-Service  
Protector



- Overall Dimensions -  
L - 48" Max (1/4" Glass)  
- 60" Max (3/8" Glass)



End Panel Kit

## GLASS ADJUSTMENT POSITIONS

